

Wall mounted unit Air Conditioning Technical Data FWT-HT



FWT02HATNMV1
FWT03HATNMV1
FWT04HATNMV1
FWT05HATNMV1
FWT06HATNMV1

TABLE OF CONTENTS

FWT-HT

1	Features	4
	FWT-HT	4
2	Specifications	5
3	Options	7
4	Dimensional drawings	8
5	Piping diagrams	9
6	Wiring diagrams	10
	Wiring Diagrams - Single Phase	10
7	Sound data	11
	Sound Pressure Spectrum	11
8	Installation	14
	Exploded view	14

1 Features

1 - 1 FWT-HT

BLDC fan motor unit for wall mounting

- 1 > Modern style decoration panel in white
- > DC fan-motor
- > 5 different sizes from 2.4 kW to 5.3 kW
- > 230V ON-OFF internal 3-way valve available as factory mounted
- > Double filtration stage (Gin-Ion filter + PM2.5 filter)

- > Using electrons to trigger chemical reactions with air borne particles, the Flash Streamer breaks down allergens such as pollen and fungal allergens and removes bothersome odours providing a better, cleaner air
- > Modbus gateway available as accessory for BMS integration



Flash Streamer

2 Specifications

2 - 1 Specifications

Technical specifications				FWT02HT	FWT03HT	FWT04HT	FWT05HT	FWT06HT	
Cooling capacity (standard conditions)	Latent capacity 2-pipe	High	kW	0.66 (1)	0.63 (1)	0.88 (1)	0.98 (1)	1.09 (1)	
		Sensible capacity 2-pipe	kW	1.52 (1)	1.61 (1)	1.88 (1)	2.64	3.19 (1)	
	Total capacity 2-pipe	Low	kW	2.11 (1)	2.23 (1)	2.58 (1)	3.37 (1)	4.07 (1)	
		Medium	kW	2.32 (1)	2.55 (1)	3.19 (1)	4.07 (1)	4.54 (1)	
		High	kW	2.43 (1)	2.70 (1)	3.49 (1)	4.54 (1)	5.28 (1)	
Heating capacity (standard conditions)	Capacity 2-pipe	Low	kW	2.40 (2) / 1.96 (6)	2.46 (2) / 2.02	3.08 (2) / 2.64 (6)	4.63 (2) / 4.04 (6)	5.28 (2) / 4.54 (6)	
		Medium	kW	2.84 (2) / 2.37 (6)	2.90 (2) / 2.40 (6)	3.84 (2) / 3.19 (6)	5.28 (2) / 4.54 (6)	6.01 (2) / 4.89 (6)	
		High	kW	3.22 (2) / 2.73 (6)	3.52 (6) / 2.96	4.40 (2) / 3.72 (6)	6.01 (2) / 4.89 (6)	7.33 (2) / 6.24 (6)	
Power input	Low	kW	0.007		0.010	0.015		0.020	
	Med.	kW	0.008		0.009	0.020		0.027	
	High	kW	0.010		0.012	0.025		0.043	
FCEER CLASS				A (6)		A		B (6)	
FCCOP CLASS				A (1)		B		B (1)	
Dimensions	Unit	Height	mm	288				317	
		Width	mm	870				1,089	
		Depth	mm	234				275	
	Packed unit	Height	mm	314				366	
		Width	mm	930				1,173	
		Depth	mm	357				395	
Weight	Unit	kg	9.5				14.1		
	Packed unit	kg	11.3				16.6		
Casing	Colour	White							
	Material	High impact polystyrene							
Heat exchanger	Type	Seamless copper tubing, mechanically bonded to rippled and louvered aluminum fins.							
	Height	mm	336				378		
	Length	mm	585				790		
	Circuits	Quantity	4				9		
		Rows	Quantity	2					
	Fin	Type	Aluminium (hydrophilic fin)						
		Thickness	m ²	0.1					
	Tube material	Copper							
	Tube type	Plain							
	Tube internal diameter	mm	6.44						
Tube thickness	mm	0.28							
Heat exchanger	Water volume	l	0.63				0.98		
Air direction control	Automatic louver (up & down)								
Air filter	Type	Gin-Ion Filter							
	Quantity	pc	2						
Fan	Type	Cross flow fan							
	Quantity	1							
	Air flow rate	Low	m ³ /h	340 (3)	357 (3)	425 (3)	663 (3)	782 (3)	
Medium		m ³ /h	391 (3)	416 (3)	544 (3)	765 (3)	883 (3)		
High		m ³ /h	442 (3)	476 (3)	629 (3)	866 (3)	1,053 (3)		
Fan motor	Model	DTC38S8P11-B0M		M3WMY10/15/18/25A-1					
	Type	DC Motor							
	Index of Protection	40		24					
	Insulation grade	Class "E"							
	Poles	8							
Insulation material	PE								
Total sound power level	Low	dBA	39 (4)		45 (4)	48 (4)	51 (4)		
	Medium	dBA	43 (4)	44 (4)	52 (4)	51 (4)	54 (4)		
	High	dBA	46 (4)	49 (4)	55 (4)		59 (4)		
Sound pressure level	Low	dBA	25 (5)	26 (5)	32 (5)	34 (5)	39 (5)		
	Medium	dBA	29 (5)	30 (5)	39 (5)	38 (5)	42 (5)		
	High	dBA	34 (5)	35 (5)	42 (5)		46 (5)		
Water flow	Cooling	Low	l/h	364	439	444	583	701	
		Medium	l/h	400	467	551	704	781	
		High	l/h	419	467	599	781	906	
	Heating	High	l/h	419	467	599	781	906	
		Low	l/h	364	439	444	583	701	
		Medium	l/h	400	467	551	704	781	
	Water pressure drop	Cooling	Low	kPa	16	17	23	11	17
			Medium	kPa	19	22	32	15	22
			High	kPa	25	29	44	22	28
Heating		Low	kPa	14 (2) / 17 (6)	14 (2) / 19 (6)	20 (2) / 22	10 (2) / 15 (6)	14 (2) / 24 (6)	
		Medium	kPa	17 (2) / 20 (6)	19 (2) / 24 (6)	27 (2) / 30	14 (2) / 18 (6)	16 (2) / 29 (6)	
		High	kPa	22 (2) / 25 (6)	26 (2) / 30 (6)	38 (2) / 41 (6)	19 (2) / 26 (6)	25 (2) / 37 (6)	

2 Specifications

2 - 1 Specifications

2

Technical specifications			FWT02HT	FWT03HT	FWT04HT	FWT05HT	FWT06HT	
Piping connections	Water	Inlet	3/4"					
		Outlet	3/4"					
	Drain	OD	16.5					
Fan motor	Speed	High	rpm	800	870	1,060	910	1,060
Fan motor	Speed	Low	rpm	650	670	780	740	820
		Medium	rpm	740	760	960	820	910

Electrical specifications			FWT02HT	FWT03HT	FWT04HT	FWT05HT	FWT06HT	
Power supply	Type	220-240 / 1 / 50						
	Phase	1~						
	Frequency	Hz	50					
	Voltage	V	220-240					
Current input	Low	A	0.07		0.09	0.11	0.16	
	Medium	A	0.08		0.12	0.16	0.22	
	High	A	0.10		0.16	0.22	0.32	
Fan motor	Power input	Low	kW	0.007		0.010	0.015	0.020
		Medium	kW	0.008	0.009	0.016	0.020	0.027
		High	kW	0.010	0.012	0.020	0.025	0.043
	Running current	Low	A	0.07		0.09	0.11	0.16
		Medium	A	0.08		0.12	0.16	0.22
		High	A	0.10		0.16	0.22	0.32

(1)Cooling: indoor temp. 27°CDB, 19°CWB; entering water temp. 7°C, water temperature rise 5K. |

(2)Heating: 2 pipe: air 20°CDB; entering water 50°C |

(3)Air flow at 0Pa ESP |

(4)Sound power level according to ISO3741 |

(5)Sound pressure measured at 1m in front of the unit and 0.8m below the vertical centre line of the unit (JIS C 9612). |

(6)Heating: 2 pipe: air 20°CDB; entering water 45°C, water temperature rise 5K. |

(7)Eurovent Testing (FWT05/06) : Louver angle is set to 45° for Standard Cooling and Fan only , Step Swing 0. |

(8)Eurovent Testing (FWT05/06) : Louver angle is set to 55° for Standard Heating , Step Swing 1. |

(9)Eurovent Testing (FWT02/03/04) : Louver angle is set to 50° for Standard Cooling and Fan only , Step Swing 1. |

(10)Eurovent Testing (FWT02/03/04) : Louver angle is set to 55° for Standard Heating , Step Swing 1. |

3 Options

3 - 1 Options

FWT-HT

No.	ITEM	MODEL	FWT~HATVMV1 FWT~HBTVMV1 FWT~HATNMV1
1	WIRELESS REMOTE CONTROLLER		ARC485B2
2	WIRED REMOTE CONTROLLER		BRC51D67
3	MODBUS PCB		FCBAG

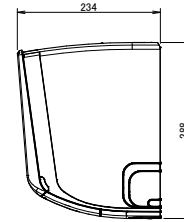
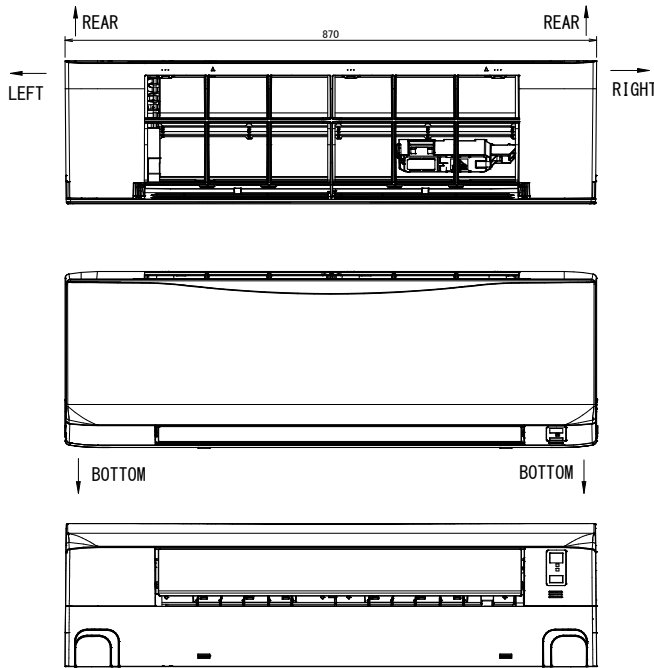
3D162048

4 Dimensional drawings

4 - 1 Dimensional Drawings

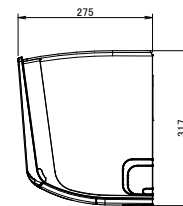
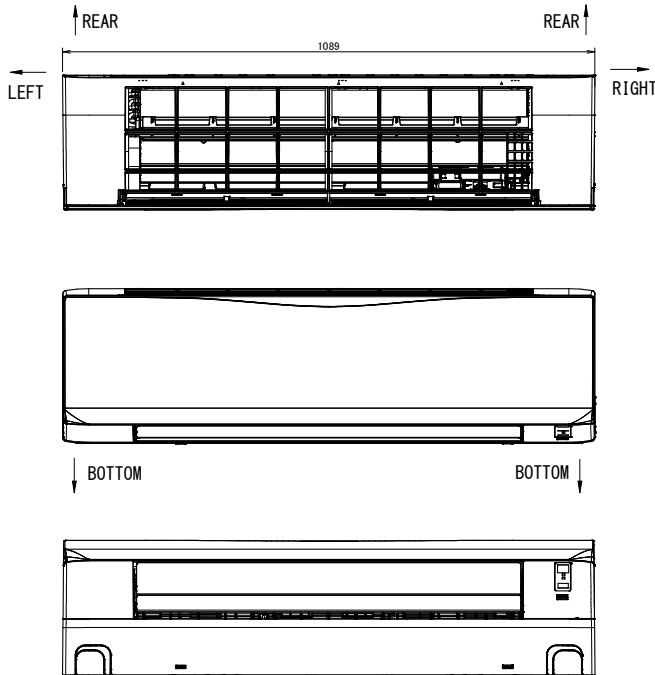
4

FWT02-04HT



3D153410A

FWT05-06HT

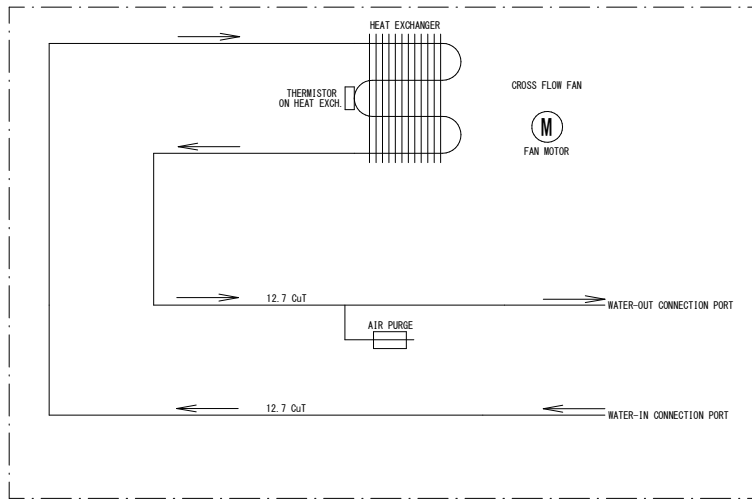


3D153418A

5 Piping diagrams

5 - 1 Piping Diagrams

FWT-HT



WATER PIPE CONNECTION PORT DIAMETERS

MODEL	WATER IN	WATER OUT
FWT02HATNMV1	3/4" BSPP FEMALE	3/4" BSPP FEMALE
FWT03HATNMV1	3/4" BSPP FEMALE	3/4" BSPP FEMALE
FWT04HATNMV1	3/4" BSPP FEMALE	3/4" BSPP FEMALE
FWT05HATNMV1	3/4" BSPP FEMALE	3/4" BSPP FEMALE
FWT06HATNMV1	3/4" BSPP FEMALE	3/4" BSPP FEMALE

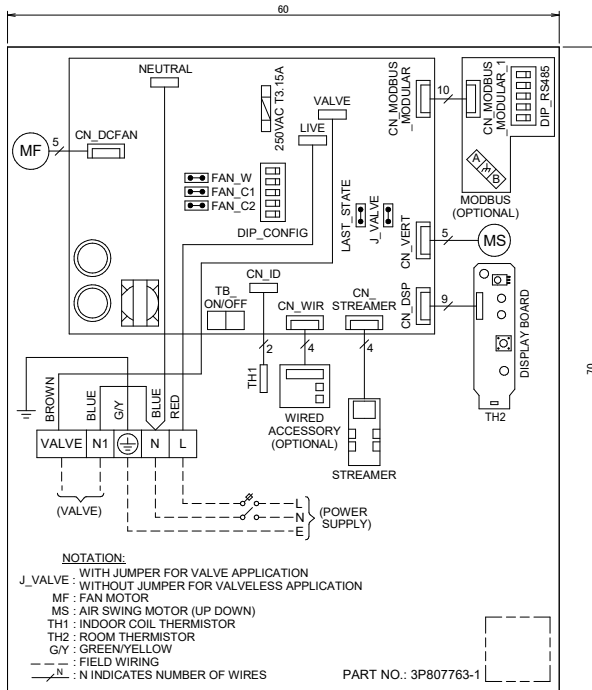
3D157785

6 Wiring diagrams

6 - 1 Wiring Diagrams - Single Phase

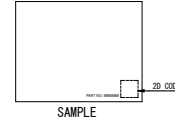
6

FWT-HT



NOTE:

- 1) FONT IN ARIAL.
- 2) BACKGROUND IN WHITE.
- 3) ALL ARTWORK AND LETTERING IN BLACK COLOUR.
- 4) BACKSIDE TO BE COATED WITH ADHESIVE.
- 5) COLOUR AND LETTERING SHOULD NOT FADE UNDER UV SUNLIGHT OR UNDER ORGANIC SOLVENT.
- 6) 2D CODE SIZE IS 7mm x 7mm.
- 7) 2D CODE POSITION MUST BE AT RIGHT BOTTOM CORNER.

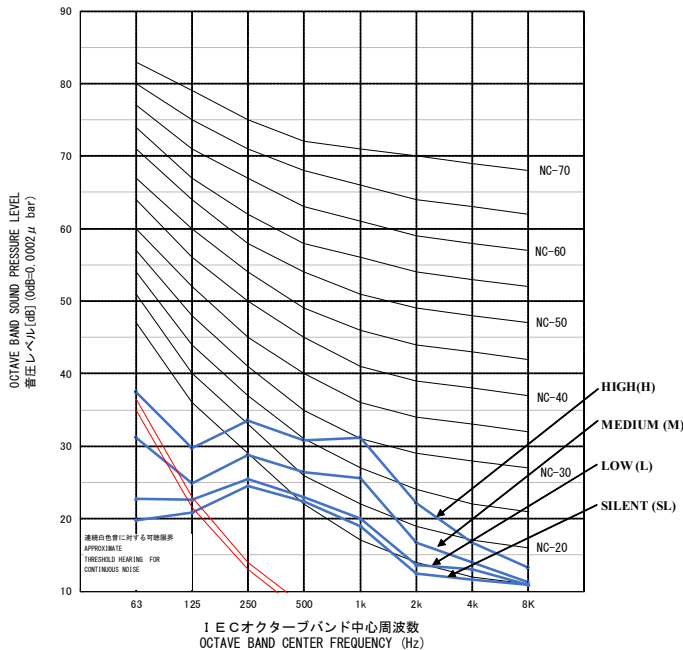


3P807763

7 Sound data

7 - 1 Sound Pressure Spectrum

FWT02HT



Fan Speed	Testing Data Input								Overall (dBA)	Noise Criteria
	63	125	250	500	1k	2k	4k	8K		
HIGH	37	30	33	31	31	22	17	13	34	30
MEDIUM	31	25	29	26	26	17	14	11	29	24
LOW	23	23	26	23	20	14	13	11	25	18
SILENT	20	21	25	22	19	12	12	11	24	17

測定場所 MEASURING PLACE

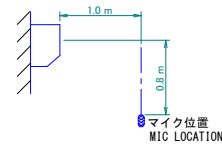
無響室
ANECHOIC CHAMBER

注) 運轉音は、運轉条件、周囲の状態等によって変ります。
NOTE: OPERATION NOISE DIFFERS WITH OPERATION AND AMBIENT CONDITIONS.

運轉条件 OPERATING CONDITIONS

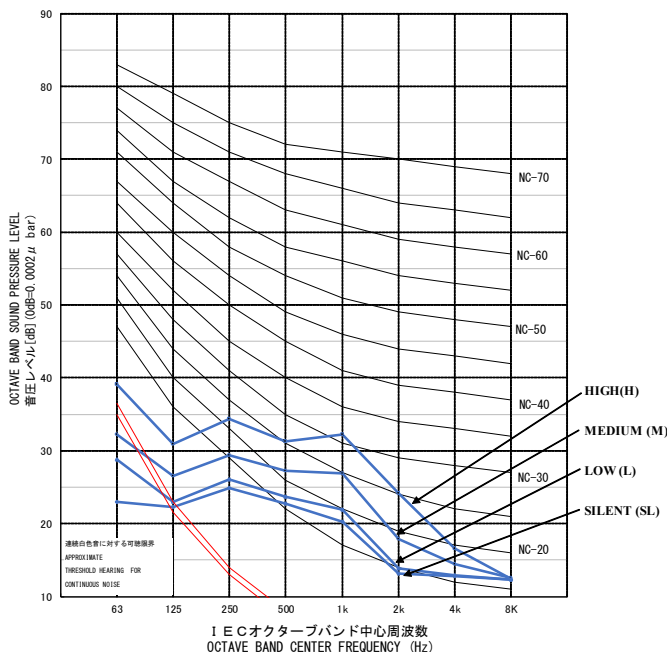
電源 POWER SOURCE 220-240V 50Hz

マイクロホン位置 LOCATION OF MICROPHONE



3D153614

FWT03HT



Fan Speed	Testing Data Input								Overall (dBA)	Noise Criteria
	63	125	250	500	1k	2k	4k	8K		
HIGH	39	31	34	31	32	24	17	12	35	31
MEDIUM	32	27	29	27	27	18	14	13	30	25
LOW	29	23	26	24	22	14	13	12	26	20
SILENT	23	22	25	23	20	13	13	12	25	18

測定場所 MEASURING PLACE

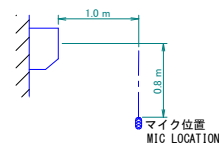
無響室
ANECHOIC CHAMBER

注) 運轉音は、運轉条件、周囲の状態等によって変ります。
NOTE: OPERATION NOISE DIFFERS WITH OPERATION AND AMBIENT CONDITIONS.

運轉条件 OPERATING CONDITIONS

電源 POWER SOURCE 220-240V 50Hz

マイクロホン位置 LOCATION OF MICROPHONE



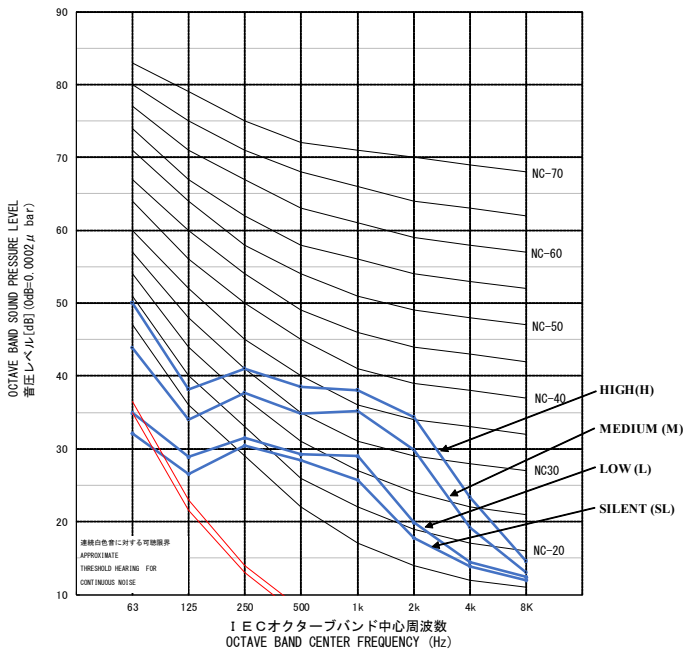
3D153613

7 Sound data

7 - 1 Sound Pressure Spectrum

7

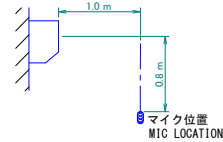
FWT04HT



測定場所 MEASURING PLACE
 無響室
 ANECHOIC CHAMBER
 注) 運転音は、運転条件、周囲の状態等によって異なります。
 NOTE: OPERATION NOISE DIFFERS WITH OPERATION AND AMBIENT CONDITIONS.

運転条件 OPERATING CONDITIONS
 電源 POWER SOURCE 220-240V 50Hz

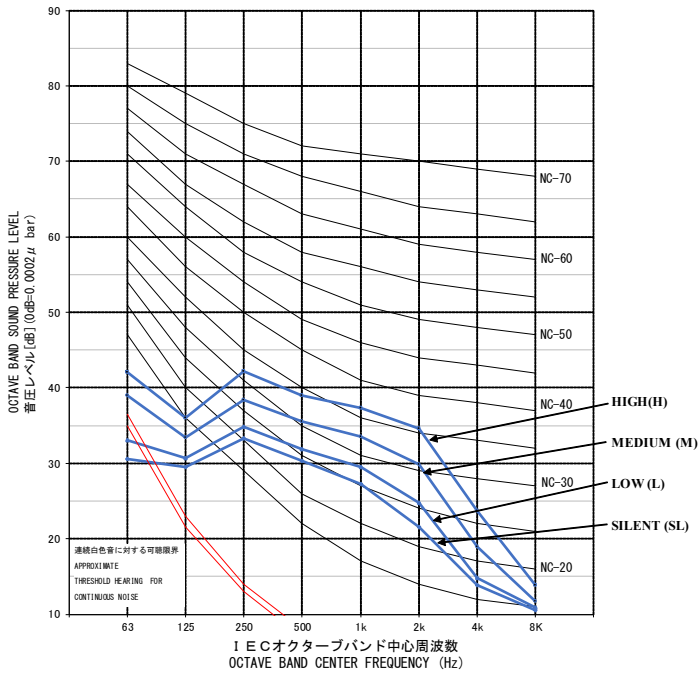
マイクロホン位置 LOCATION OF MICROPHONE



Testing Data Input									Overall (dB A)	Noise Criteria
Fan Speed	63	125	250	500	1k	2k	4k	8K		
HIGH	50	38	41	38	38	34	23	15	42	37
MEDIUM	44	34	38	35	35	30	19	13	39	34
LOW	35	29	32	29	29	20	14	12	32	28
SILENT	32	27	30	28	26	18	14	12	29	24

3D153612

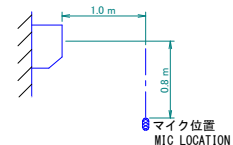
FWT05HT



測定場所 MEASURING PLACE
 無響室
 ANECHOIC CHAMBER
 注) 運転音は、運転条件、周囲の状態等によって異なります。
 NOTE: OPERATION NOISE DIFFERS WITH OPERATION AND AMBIENT CONDITIONS.

運転条件 OPERATING CONDITIONS
 電源 POWER SOURCE 220-240V 50Hz

マイクロホン位置 LOCATION OF MICROPHONE



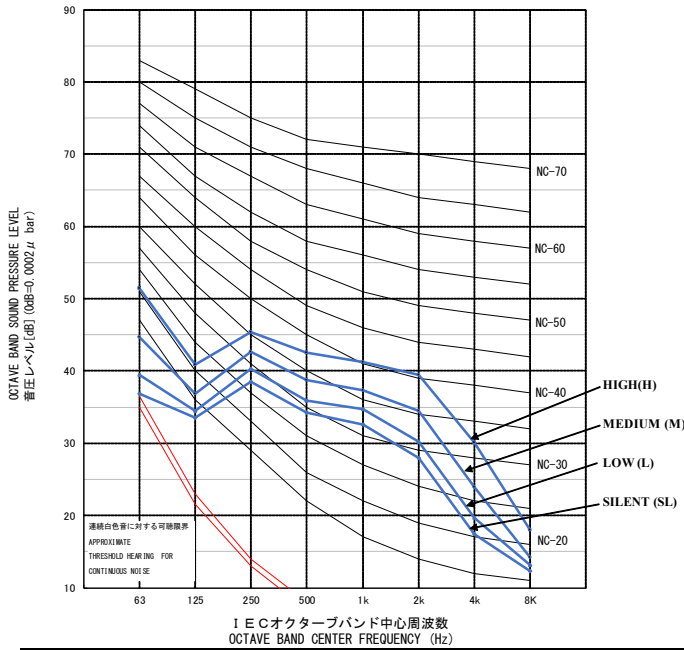
Testing Data Input									Overall (dB A)	Noise Criteria
Fan Speed	63	125	250	500	1k	2k	4k	8K		
HIGH	42	36	42	39	37	35	24	14	42	36
MEDIUM	39	33	38	36	34	30	19	12	38	33
LOW	33	31	35	32	30	25	15	11	34	29
SILENT	31	30	33	30	27	22	14	11	32	25

3D153494

7 Sound data

7 - 1 Sound Pressure Spectrum

FWT06HT



Fan Speed	Testing Data Input								Overall (dBA)	Noise Criteria
	63	125	250	500	1k	2k	4k	8K		
HIGH	51	41	45	43	41	39	30	18	46	40
MEDIUM	45	37	43	39	37	35	24	14	42	36
LOW	40	35	40	36	35	30	20	13	39	34
SILENT	37	34	39	34	33	28	17	12	37	32

測定場所 MEASURING PLACE

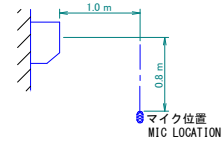
無響室
ANECHOIC CHAMBER

注) 運転音は、運転条件、周囲の状態等によって異なります。
NOTE: OPERATION NOISE DIFFERS WITH OPERATION AND AMBIENT CONDITIONS.

運転条件 OPERATING CONDITIONS

電源 POWER SOURCE 220-240V 50Hz

マイクロホン位置 LOCATION OF MICROPHONE



3D153493

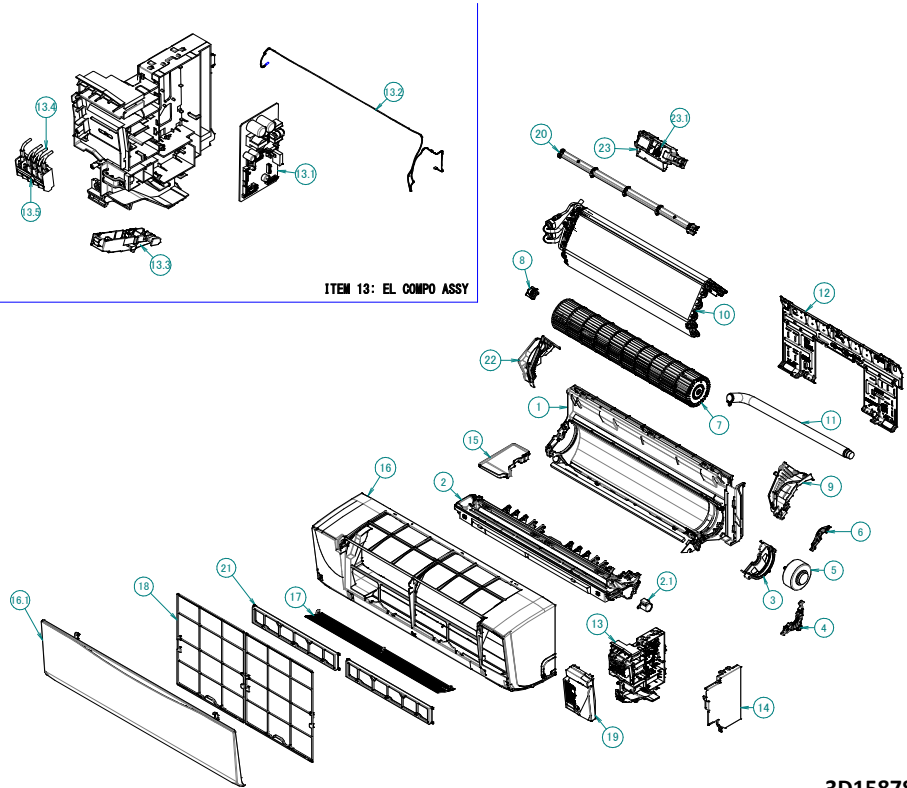
8 Installation

8 - 1 Exploded view

8

FWT02HT
FWT03HT
FWT04HT

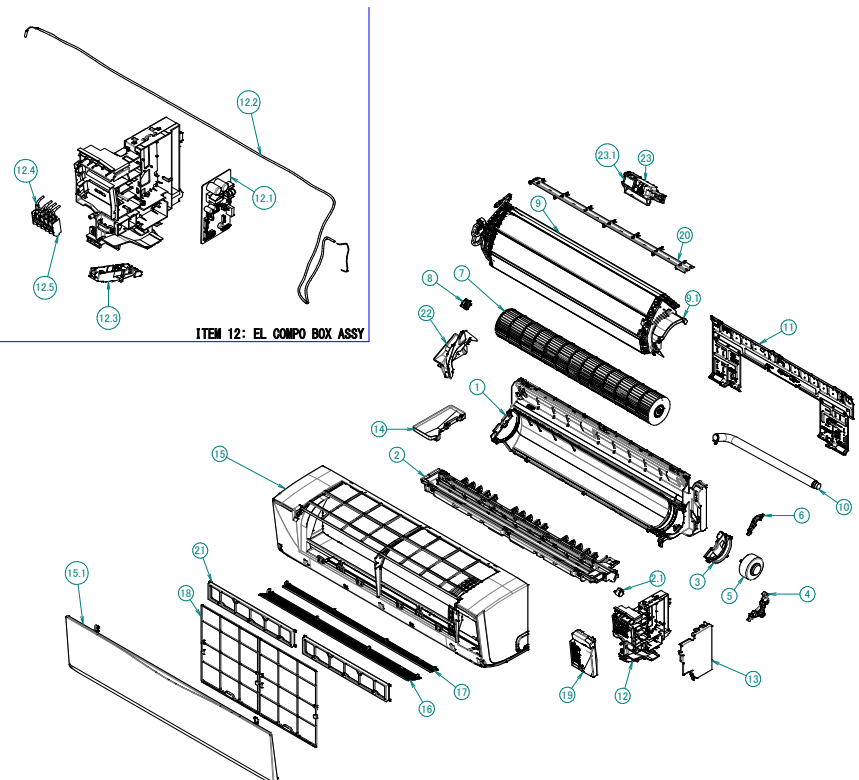
NO	DESCRIPTION
1	BOTTOM FRAME ASSY
2	DRAIN PAN ASSY
2.1	STEPPING MOTOR
3	MOTOR MOUNTING PLATE (1)
4	MOTOR MOUNTING PLATE (2)
5	FAN MOTOR (DC)
6	MOTOR MOUNTING PLATE (3)
7	CROSS FLOW FAN ASSY
8	FAN BEARING VIBRATION ABSORBER ASSY (M)
9	RIGHT SIDE PANEL(RESIN)
10	HEAT EXCHANGER ASSY
11	DRAIN HOSE ASSY
12	INSTALLATION PLATE ASSY
13	EL.COMPO.ASSY
13.1	CONTROL MODULE
13.2	INDOOR COIL SENSOR
13.3	PRINTED CIRCUIT BOARD ASSY (DISPLAY)
13.4	ASSY, HARNESS WIRE
13.5	TERMINAL BLOCK
14	SHIELD PLATE(2)
15	DRAIN PAN ASSY (RESIN) EXTENSION
16	FRONT GRILLE ASSY
16.1	FRONT PANEL
17	DISCH.GRILLE HOR.BLADE ASSY
18	AIR FILTER
19	SERVICE COVER ASSY
20	SEALING PLATE (TOP)
21	AIR FILTER PM2.5
22	SIDE PANEL (LEFT)
23	COVER ASSY, STREAMER (HOLDER)
23.1	DISCHARGE PLATE STREAMER ASSY



3D158780

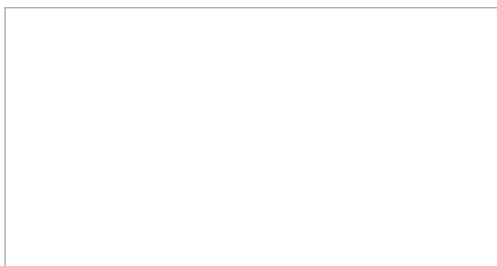
FWT05HT
FWT06HT

1	BOTTOM FRAME ASSY
2	DRAIN PAN ASSY
2.1	STEPPING MOTOR
3	MOTOR MOUNTING PLATE (1)
4	MOTOR MOUNTING PLATE (2)
5	FAN MOTOR (DC)
6	MOTOR MOUNTING PLATE (3)
7	CROSS FLOW FAN ASSY
8	FAN BEARING VIBRATION ABSORBER ASSY (M)
9	HEAT EXCHANGER ASSY
9.1	RIGHT SIDE PANEL(RESIN)
10	DRAIN HOSE ASSY
11	INSTALLATION PLATE ASSY
12	EL.COMPO.ASSY
12.1	CONTROL MODULE
12.2	INDOOR COIL SENSOR
12.3	PRINTED CIRCUIT BOARD ASSY (DISPLAY)
12.4	ASSY, HARNESS WIRE
12.5	TERMINAL BLOCK
13	SHIELD PLATE(2)
14	DRAIN PAN ASSY (RESIN) EXTENSION
15	FRONT GRILLE ASSY
15.1	FRONT PANEL
16	DISCH.GRILLE HOR.BLADE (1) ASSY
17	DISCH.GRILLE HOR.BLADE (2) ASSY
18	AIR FILTER
19	SERVICE COVER ASSY
20	SEALING PLATE (TOP)
21	AIR FILTER PM2.5
22	LEFT SIDE PANEL (RESIN)
23	COVER ASSY, STREAMER (HOLDER)
23.1	DISCHARGE PLATE STREAMER ASSY



3D158781

Daikin Europe N.V. Naamloze Vennootschap · Zandvoordestraat 300 · 8400 Oostende · Belgium · www.daikin.eu · BE 0412 120 336 · RPR Oostende (Responsible Editor)



Daikin Europe N.V. participates in the ECP programmes for Fan Coil Units and Variable Refrigerant Flow systems. Daikin Applied Europe S.p.A. participates in the ECP programmes for Liquid Chilling Packages and Hydronic Heat Pumps. Check ongoing validity of certificate: www.eurovent-certification.com

EEEN26

02/2026



The present leaflet is drawn up by way of information only and does not constitute an offer binding upon Daikin Europe N.V. Daikin Europe N.V. has compiled the content of this leaflet to the best of its knowledge. No express or implied warranty is given for the completeness, accuracy, reliability or fitness for particular purpose of its content and the products and services presented therein. Specifications are subject to change without prior notice. Daikin Europe N.V. explicitly rejects any liability for any direct or indirect damage, in the broadest sense, arising from or related to the use and/or interpretation of this leaflet. All content is copyrighted by Daikin Europe N.V.